

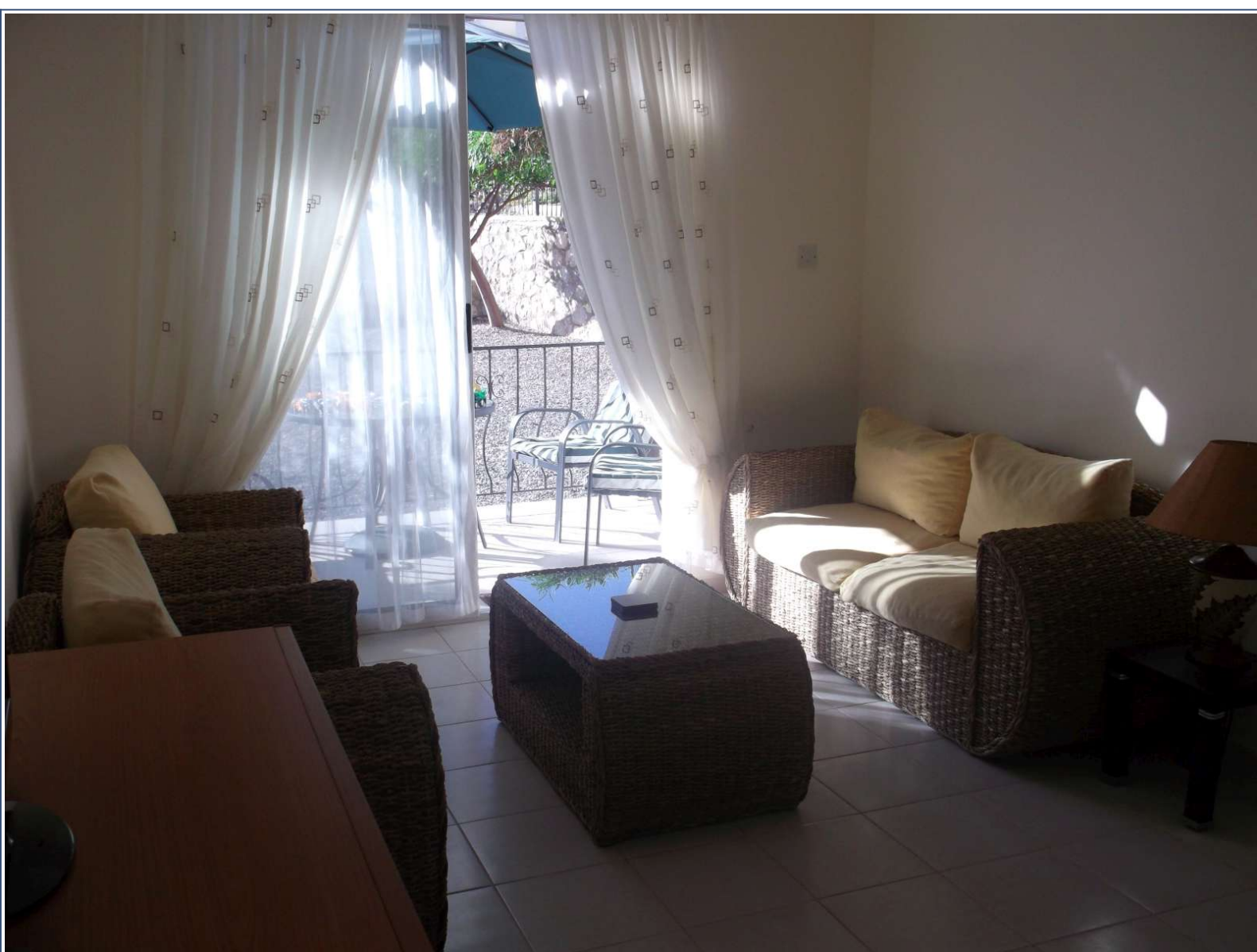


Contact: Mark Gladwin

Unwin Estates

info@unwinestates.com

Tel: (0)207 1936 709



Asking Price: £34,950



Property Details

Price: £34,950

Bedrooms: 2

Location:

Property Features

Accommodation with approximate room sizes comprise of the following:

Open Plan Lounge/Diner/Kitchen - 21'7" x 10'9" Dual aspect with double glazed windows to front and double glazed patio doors to rear, coved ceiling, air conditioning unit, eye and base level fitted units incorporating stainless steel sink with mixer tap and ceramic tiled splash backs, integrated appliances including hob and oven, washing machine and a free standing fridge freezer, tiled floor.

Master Bedroom - 9'11" x 9'1" Dual aspect with double glazed windows to the front and side, coved ceiling, air conditioning unit, range of fitted wardrobes, tiled floor.

Bedroom 2 - 9'9" x 9'1" Dual aspect with double glazed windows to the side and rear, coved ceiling, air conditioning unit, range of fitted wardrobes, tiled floor.

Family Bathroom Double glazed window to side, ceramic tiled walls, wall mounted mirror, shower cubicle with shower screen, shower head with mixer tap, pedestal wash hand basin with mixer tap, low level WC, tiled floor.

Outside Rear private garden, allocated parking space, large communal landscaped gardens, two large communal swimming pools.



Unwin Estates

info@unwinestates.com



Contact: Mark Gladwin

(0)207 1936 709



