

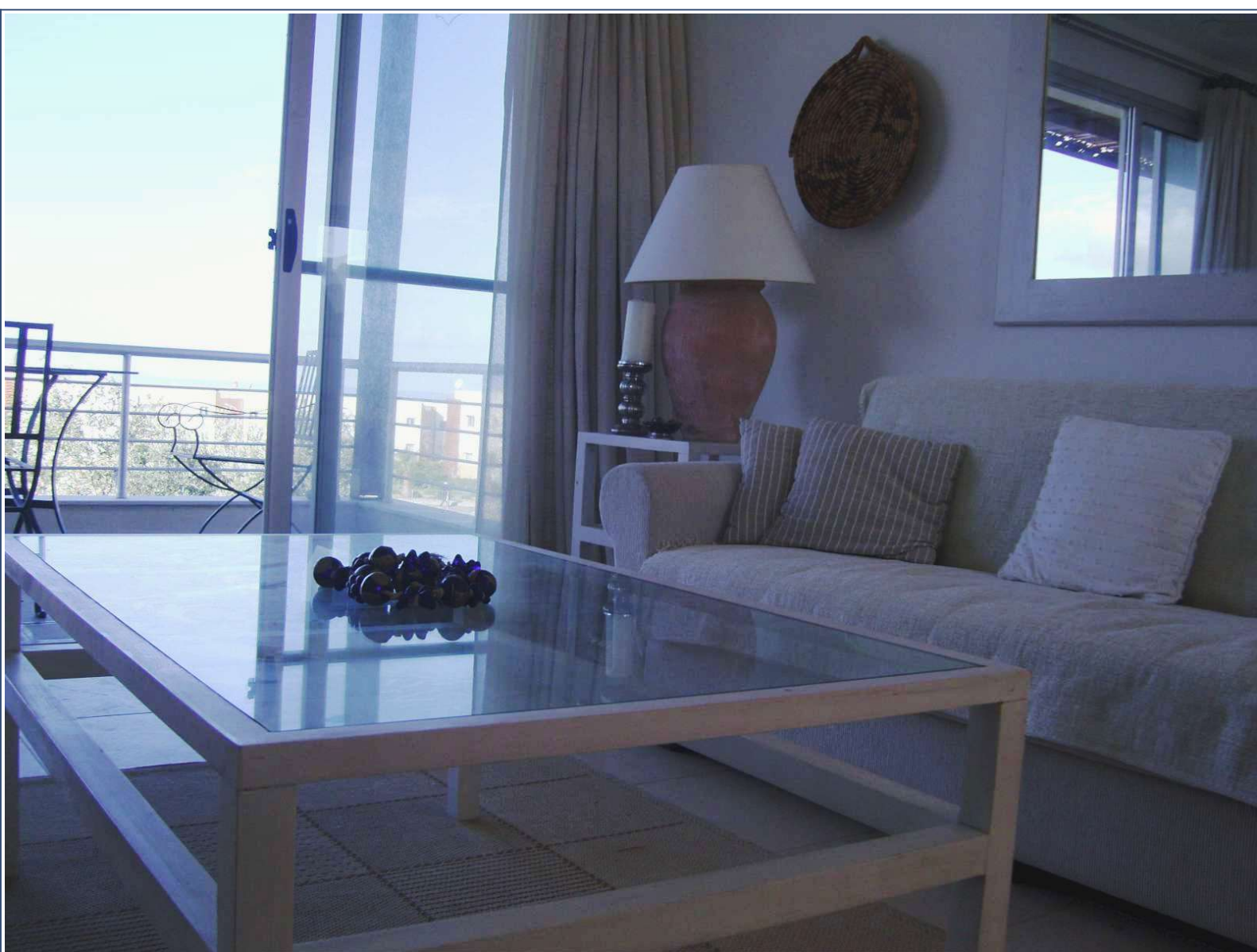


Contact: Mark Gladwin

Unwin Estates

info@unwinestates.com

Tel: (0)207 1936 709



Asking Price: £32,000



Accommodation with approximate room sizes comprise of the following: Open Plan Lounge/Diner/Kitchen - 18'5" x 14'3" Patio doors with fly screens leading to large balcony, ceiling fan, air conditioning unit, base and eye level fitted kitchen units incorporating stainless steel sink with mixer tap, ceramic tiled splash backs, oven, hob with overhead extractor fan, tiled floor. Inner Hallway Recessed alcove with washing machine, tiled floor. Master Bedroom - 11'8" x 10'9" Patio doors with fly screens leading to large balcony, ceiling fan, air conditioning unit, range of fitted wardrobes, tiled floor. Family Bathroom Window to side, ceramic tiled walls, bath with fitted shower screen and overhead shower and mixer tap, pedestal wash hand basin with mixer tap, low level WC, tiled floor. Outside Private grounds, allocated parking, block paved pathways, 3 communal swimming pools, and gated access to sandy beach.



Unwin Estates

info@unwinestates.com

(0)207 1936 709

Property Details

Price: £32,000

Bedrooms: 1

Location:

Property Features





Contact: Mark Gladwin



