



Contact: Mark Gladwin

Unwin Estates

info@unwinestates.com

Tel: (0)207 1936 709



Asking Price: £49,950



Property Details

Price: £49,950

Bedrooms: 3

Location:

Property Features

Accommodation with approximate room sizes comprise of the following:

Lounge - 22 x 11'5" Triple aspect, double glazed patio doors leading out to the balcony, tiled floor.

Kitchen/Diner - 17'7" x 8'7" Patio door leading out to balcony, range of eye and base level fitted kitchen units incorporating stainless steel sink with mixer tap, plumbing for washing machine, ceramic tiled splash backs, tiled floor.

Master Bedroom - 11'5" x 11' Double glazed window to rear,, range of fitted wardrobes, tiled floor.

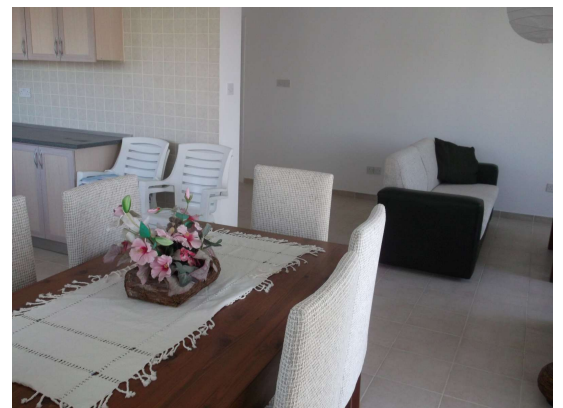
Master Bedroom En-Suite Window to side, ceramic tiled walls, shower cubicle with shower head and mixer tap, wash hand basin with mixer tap, low level WC, tiled floor.

Bedroom 2 - 10'9" x 9'9" Dual aspect, range of fitted wardrobes, tiled floor.

Bedroom 3 - 13'1" x 9'7" Double glazed window to the side, range of fitted wardrobes, tiled floor.

Family Bathroom Double glazed window to the rear, tiled walls, wall mounted mirror, bath tub with mixer tap, and shower head, shower screen, wash hand basin with mixer tap, low level WC, tiled floor.

Outside





Contact: Mark Gladwin

info@unwinestates.com

(0)207 1936 709



