

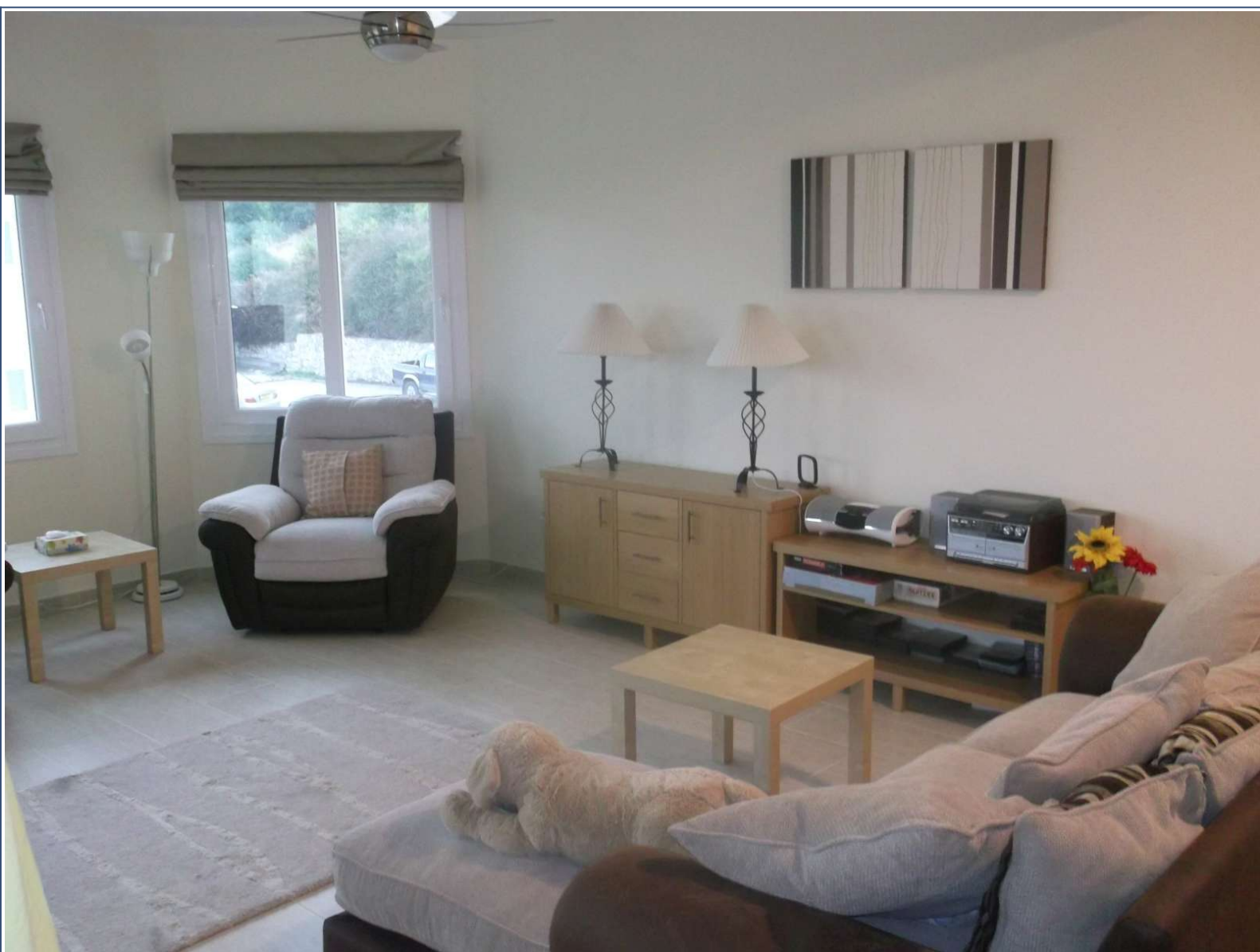


Contact: Mark Gladwin

**Unwin Estates**

[info@unwinestates.com](mailto:info@unwinestates.com)

Tel: (0)207 1936 709



Asking Price: £36,950



## Property Details

Price: £36,950

Bedrooms: 3

Location:

## Property Features

Accommodation with approximate room sizes comprise of the following:

Lounge - 22'4" x 15'11" Triple aspect with windows to sides and double glazed patio doors to front balcony, air conditioning unit, feature marble fireplace, tiled floor.

Kitchen - 12'7" x 9'1" Dual aspect with window to side and part glazed door to side balcony, range of eye and base level fitted kitchen units incorporating stainless steel sink with mixer tap and ceramic tiled splash backs, granite work surfaces, hob, fitted oven, extractor fan, tiled floor.

Inner Hallway Hallway with tiled floor leading to.

Master Bedroom - 11'9" x 10'6" Window to rear, air conditioning unit, range of fitted wardrobes, tiled floor.

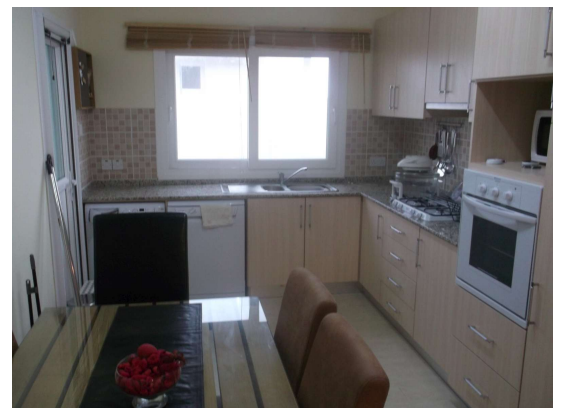
Master Bedroom En-Suite Window to side, ceramic tiled walls, wall mounted mirror, shower cubicle with shower head and mixer tap, pedestal wash hand basin with mixer tap, low level WC, tiled floor.

Bedroom 2 - 10'6" x 9'6" Dual aspect with windows to rear and side, air conditioning unit, range of fitted wardrobes, tiled floor.

Bedroom 3 - 11'5" x 10'6" Double glazed patio door to side balcony, range of fitted wardrobes, tiled floor.

Family Bathroom Window to side, ceramic tiled walls, wall mounted mirror, bath with shower head and mixer tap, pedestal wash hand basin with mixer tap, low level WC, tiled floor.

Outside Block paved driveway to off road parking, large communal swimming





Contact: Mark Gladwin

pool, superb views.



Unwin Estates

[info@unwinestates.com](mailto:info@unwinestates.com)

(0)207 1936 709



