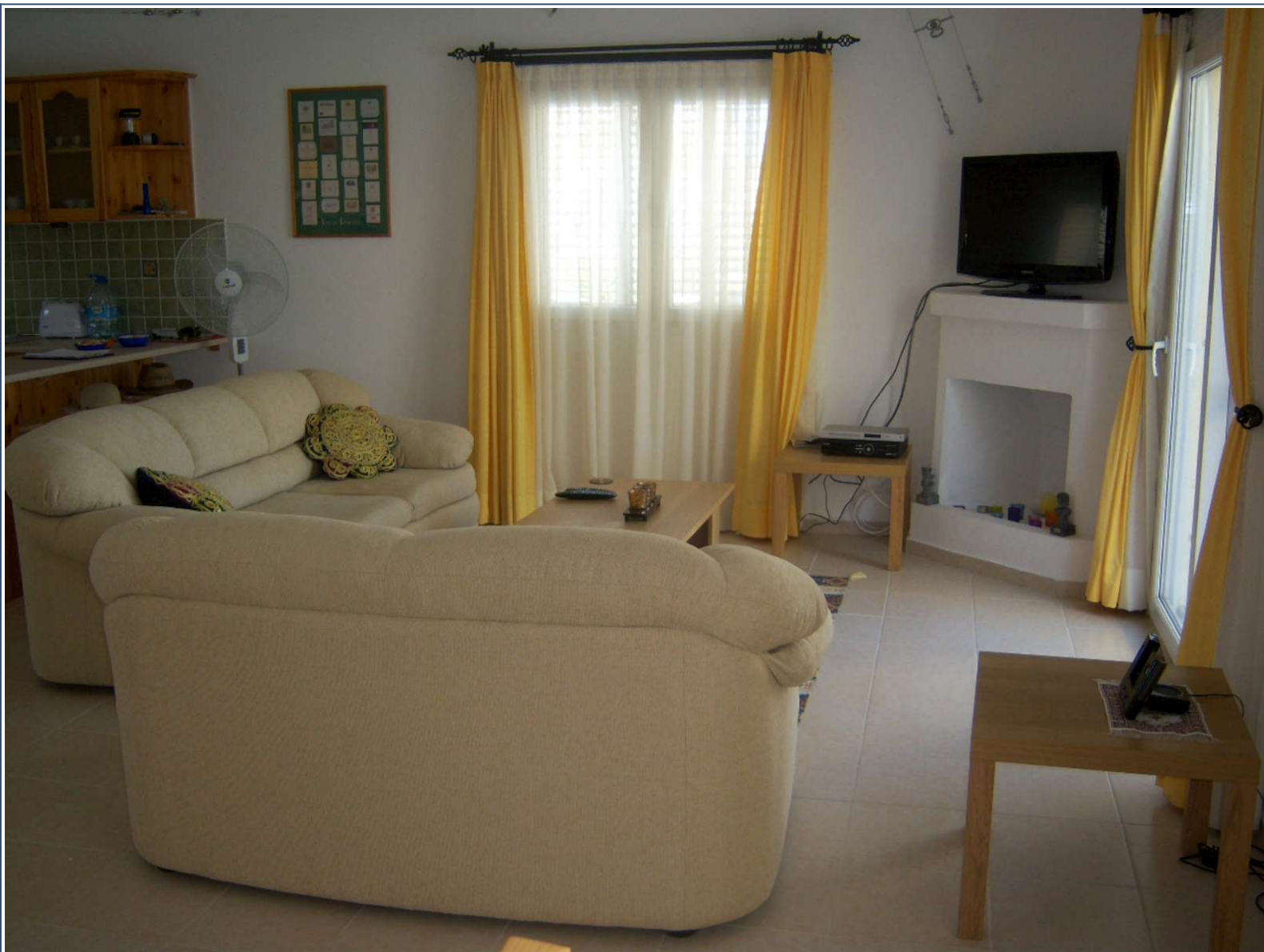


Unwin Estates

info@unwinestates.com

Tel: (0)207 1936 709



Asking Price: £510



Property Details

Price: £510

Bedrooms: 3

Location:

Property Features

Accommodation briefly comprises of the following:

Open Plan Lounge/Diner Dual aspect with two patio doors leading onto rear terrace and pool area, curtains and curtain poles, 2 sofas, dining table and chairs, open fireplace plus tiled flooring.

Kitchen Window to front, wide range of solid wood eye and base level wall units, stainless steel sink, drainer and mixer tap, range of white goods including fridge/freezer, washing machine and integral oven and hob plus tiled flooring.

Ground Floor Bedroom 1 Dual aspect, wood beamed ceiling, air-conditioning unit, curtains and curtain pole, double bed and two side tables plus tiled flooring.

Ground Floor Bedroom 2 Window to side, wood beamed ceiling, air-conditioning unit, curtains and curtain pole, single bed and side tables plus tiled flooring.

Family Bathroom Window to side, ceramic tiled walls, shower cubicle with overhead shower, tray and mixer tap, pedestal wash hand basin with mixer tap, low level WC, tiled floor.

Master Bedroom Triple aspect with patio doors leading to terrace and pool area, wood beamed ceiling, air-conditioning unit, fitted wardrobes, curtains and curtain poles, double bed and side tables plus tiled flooring. En-Suite - Window to side, ceramic tiled walls, shower cubicle with overhead shower, tray and mixer tap, pedestal wash hand basin with mixer tap, low level WC, tiled floor.

Outside Large gravelled and landscaped garden, BBQ, mature shrubs, plants and fruit trees, block paved pathway and driveway, extra terracing, 8m x 4m overflow swimming pool, stone wall boundary to front and side and generator.





Unwin Estates

info@unwinestates.com

(0)207 1936 709



