



Contact: Mark Gladwin

Unwin Estates

info@unwinestates.com

Tel: (0)207 1936 709



Asking Price: £49,950



Property Details

Price: £49,950

Bedrooms: 3

Location:

Property Features

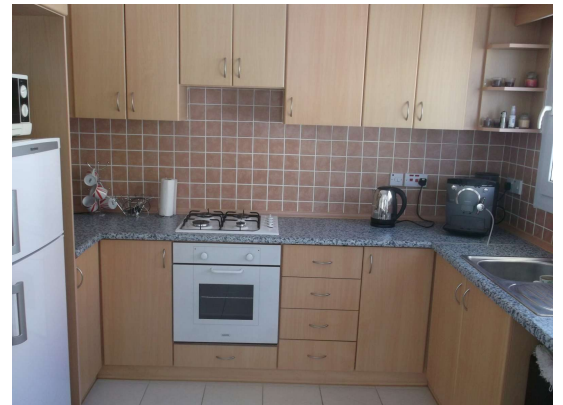
Accommodation with approximate room sizes comprise of the following: Open Plan Lounge/Diner/Kitchen - 24'0" x 18'6" Dual aspect with windows to front and side, double glazed patio door to front balcony, part glazed door to side balcony, air conditioning unit, range of eye and base level fitted kitchen units incorporating stainless steel sink with mixer tap and ceramic tiled splash backs, hob, fitted oven, dishwasher, fridge freezer, tiled floor. Inner Hallway Hallway with fitted cupboard housing washing machine, tiled floor. Master Bedroom - 11'5" x 10'0" Window to rear, air conditioning unit, range of fitted wardrobes, tiled floor. Master Bedroom En-Suite Window to front, ceramic tiled walls, wall mounted mirror, half bath with shower head and mixer tap, pedestal wash hand basin with mixer tap, low level WC, tiled floor. Bedroom 2 - 10'10" x 10'2" Dual aspect with windows to rear and side, range of fitted wardrobes, tiled floor. Bedroom 3 - 11'0" x 9'1" Window to side, tiled floor. Family Bathroom Window to side, ceramic tiled walls, wall mounted mirror, shower cubicle with shower head and mixer tap, pedestal wash hand basin with mixer tap, low level WC, tiled floor. Outside Off road parking, large communal swimming pool with large pool terracing, roof terrace with BBQ sea and mountain views.



Unwin Estates

info@unwinestates.com

(0)207 1936 709





Contact: Mark Gladwin



