



Contact: Mark Gladwin

**Unwin Estates**

info@unwinestates.com

Tel: (0)207 1936 709



Asking Price: £29,950



## Property Details

Price: £29,950

Bedrooms: 2

Location:

## Property Features

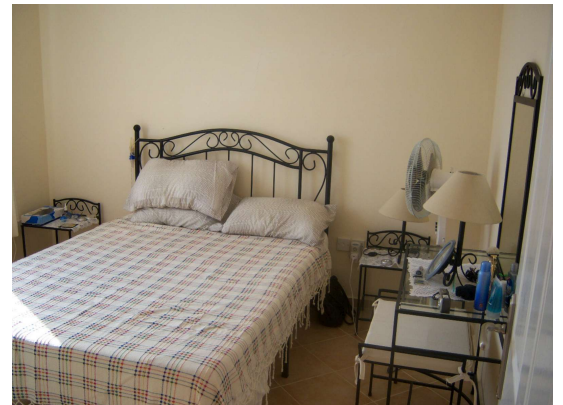
Accommodation with approximate room sizes comprise of the following:

Lounge - 16'6 x 12'5 With patio doors to side leading to balcony, air-conditioning unit, ceramic tiled floor.

Kitchen - 12'4 x 8'10 An extensive range of base and eye level units, incorporating stainless steel sink unit with mixer tap, roll top surfaces, washing machine, to include integrated oven and hob, fridge freezer, complimentary tiling to walls, ceramic tiled floor.

Master Bedroom - 11'8 x 10'3 Window to side with mountain views, fitted wardrobes, ceramic tiled floor.

Bedroom 2 - 10'5 x 10'4 Window to side with mountain views, fitted wardrobes,





ceramic tiled floor.

Family Bathroom With obscure glazed window to side, pedestal wash hand basin with mixer tap over, low level WC, bath with mixer tap and shower attachment over, complimentary tiling to walls and floor.

Outside Roof terrace Large private roof terrace with floor tiles, wrought iron balustrades, stone walls to boundaries, sun loungers, with sofa style chairs.

Grounds There is a large communal overflow swimming pool surrounded by plenty of terracing and block paved communal car parking areas.



Unwin Estates

[info@unwinestates.com](mailto:info@unwinestates.com)

(0)207 1936 709

