

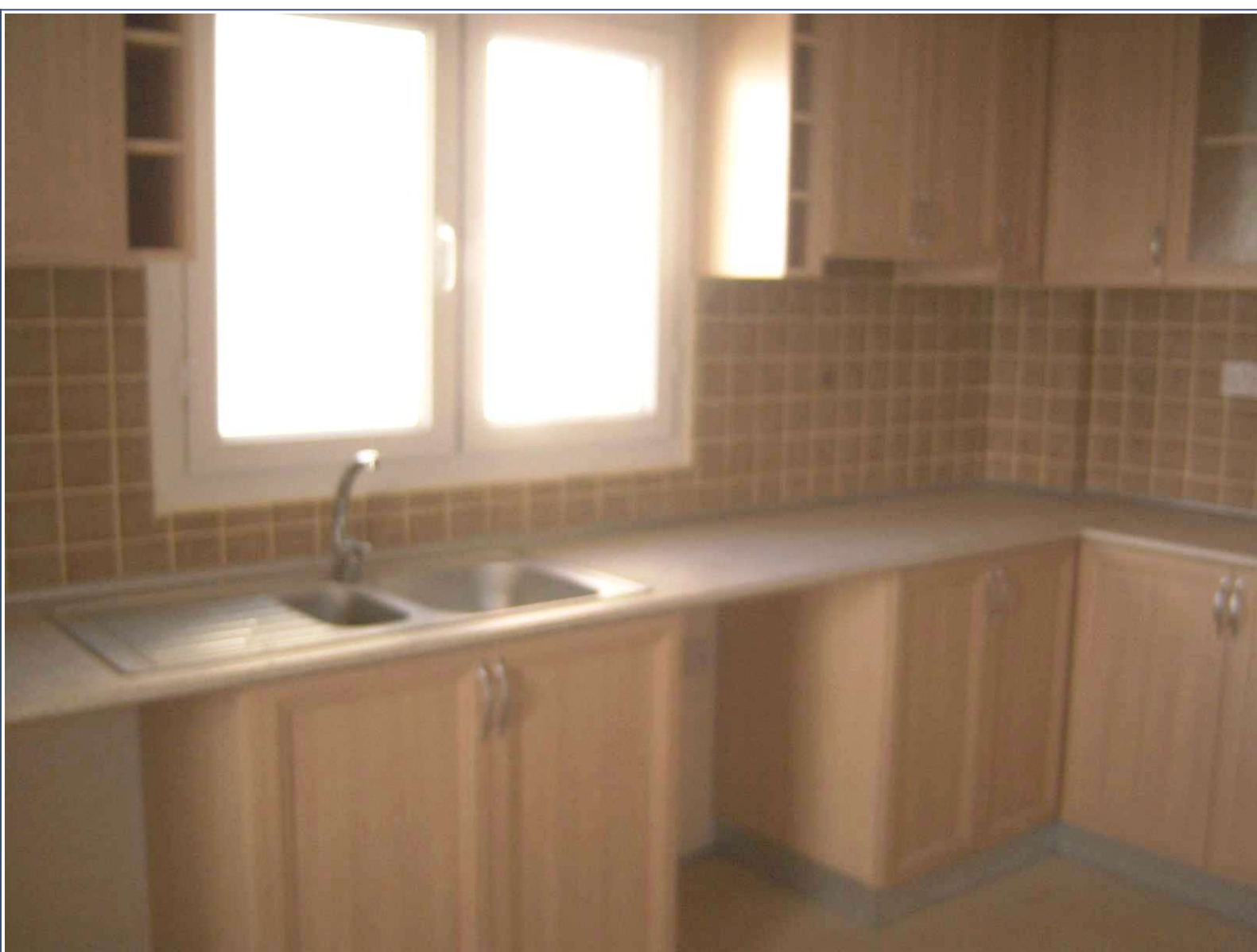


Contact: Mark Gladwin

Unwin Estates

info@unwinestates.com

Tel: (0)207 1936 709



Asking Price: £54,950



Property Details

Price: £54,950

Bedrooms: 3

Location:

Property Features

Specifications:

Internal

3 bedrooms

En-Suite shower room to Master bedroom

Lounge with access to a large balcony

Family bathroom/WC with vanity units

Fully fitted kitchen with appliances

Internal doors - American pressed wood

Ceramic flooring throughout

Built-in wardrobes to 2 bedrooms

Wrought iron balustrades to the staircase and balcony

Hidrofor' water pressure system

Total covered floor area 125m?

Air-conditioning wiring

Central heating piping

External

Double glazed wood effect UPVC Windows

Entrance door - solid wood

External floors (communal areas)- marble Balconies - 12m?

Outside





Contact: Mark Gladwin

Stone walls to all boundaries
Underground covered parking
Communal swimming pool 16m x 8m
Children playground
Landscaped gardens
Communal water wells with drinking and irrigation water



Unwin Estates
info@unwinestates.com
(0)207 1936 709

