



Contact: keith 123123

Test estate agents

k@turbowebdesign.co.uk

Tel: 01704 111 222

## Hill Street, Blackpool, FY4 1DF



Asking Price: £84,950



SEVEN BEDROOM DE-REGISTERED GUEST HOUSE, Lounge, Dining Room, Kitchen, Utility Room, Nine Bathrooms, Cellar Room, Single Driveway To The Rear

#### **Porch**

Entrance door to the front, cornice ceiling, carpet.

#### **Entrance Hall**

Entrance door to the front, radiator, cornice ceiling, carpet.

#### **Lounge - 15'10" (4.83m) Into Bay x 12'1" (3.68m)**

Double glazed bay window to the front, radiator, television and telephone point, cornice ceiling, carpet.

#### **Dining Room - 12'10" (3.91m) x 10'5" (3.18m)**

Double glazed window to the rear, radiator, cornice ceiling, carpet.

#### **Kitchen - 14'7" (4.44m) x 9'0" (2.74m)**

Entrance door and window to the side, fitted kitchen with wall and base units with work surface, double bowl sink unit with mixer tap, cooker to stay with extractor hood over, wall tiling, vinyl flooring.

#### **Storage Room - 10'8" (3.25m) x 9'0" (2.74m)**

Window to the side, radiator, coved ceiling.

## **Property Details**

Price: £84,950

Bedrooms: 7

Location: Hill Street

## **Property Features**

Seven Bedroom De-Registered Guest House

Lounge, Dining Room, Kitchen, Utility Room

Nine Bathrooms, Cellar Room, Single Driveway To The Rear





**Utility Room - 6'6" (1.98m) x 6'6" (1.98m)**

Windows to the rear and side, space for washing machine, fridge/freezer, and tumble dryer, shower room comprising: Shower cubicle with electric shower, close coupled W.C and pedestal wash hand basin, vinyl flooring.

**Cellar Rooms**

Two storage rooms, meter cupboard, carpet.

**First Floor Landing**

Storage cupboard, radiator, carpet.

**Bedroom One - 16'5" (5m) x 13'0" (3.96m)**

Double glazed window to the front, radiator, television point, coved ceiling, carpet.

**En-Suite**

Shower room suite comprising: Shower cubicle, low level W.C and cloakroom wash hand basin, carpet.

**Bedroom Two - 12'10" (3.91m) x 10'6" (3.2m)**

Double glazed window to the rear, radiator, television point, coved ceiling, carpet.

**En-Suite**

Shower room suite comprising: Shower cubicle, low level W.C and cloakroom wash hand basin, carpet.

**Bedroom Three - 7'3" (2.21m) x 13'1" (3.99m)**

Double glazed window to the side, radiator, coved ceiling, wood flooring.

**En-Suite**

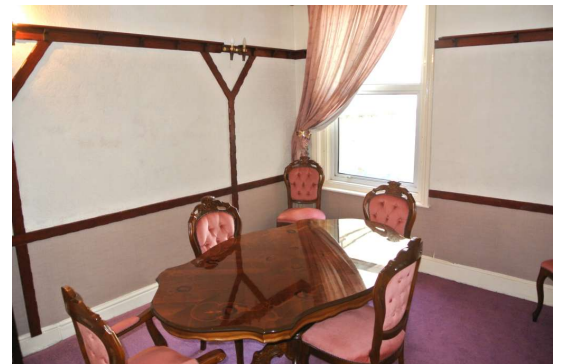
Shower room suite comprising: Shower cubicle, low level W.C and cloakroom wash hand basin, carpet.

**Bedroom Four - 10'1" (3.07m) x 9'8" (2.95m)**

Double glazed window to the rear, radiator, coved ceiling, wood flooring.

**En-Suite**

Shower room suite comprising: Shower cubicle, low level W.C and cloakroom wash hand basin, carpet.





### **Second Floor Landing**

Storage cupboard, radiator, carpet.

### **Bedroom Five - 10'3" (3.12m) x 7'4" (2.24m)**

Double glazed window to the front, radiator, television point, carpet.

### **En-Suite**

Shower room suite comprising: Shower cubicle, low level W.C and cloakroom wash hand basin, carpet.

### **Bedroom Six - 13'3" (4.04m) x 10'0" (3.05m)**

Double glazed window to the rear, coved ceiling, television point, carpet.

### **En-Suite**

Shower room suite comprising: Shower cubicle, low level W.C and cloakroom wash hand basin, carpet.

### **Bedroom Seven - 13'4" (4.06m) x 8'6" (2.59m)**

Double glazed window to the rear, radiator, television point, coved ceiling, carpet.

### **En-Suite**

Shower room suite comprising: Shower cubicle, close coupled W.C, pedestal wash hand basin, vinyl flooring.

### **Gardens**

Paved garden to the front and rear.

### **Parking**

Single driveway to the rear.

### **Notice**

Please note we have not tested any apparatus, fixtures, fittings, or services. Interested parties must undertake their own investigation into the working order of these items. All measurements are approximate and photographs provided for guidance only.



Contact: keith 123123



Test estate agents

k@turbowebdesign.co.uk

01704 111 222

